

Stoneedge

JOURNAL OF INDIAN DIMENSIONAL STONE INDUSTRIES



What to Look for in a
Diamond Blade



Sand in
Sandstone

Bountiful Basalt

ADVERTORIAL

Stoneedge



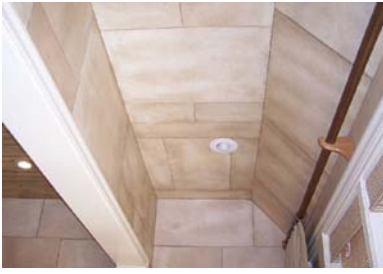
Bendable WEATHERED STONE

- Minhaj Farrukh
USA

Humans have always perfected the art of creating “artificial products” which exceed nature’s creation in many ways.

In the 19th century, in St. Petersburg, Russia, Plywood was invented, by Emmanuel Nobel, father of Alfred Nobel, the inventor of dynamite and founder of Nobel Prize. Plywood made with thin layers of wood bonded together, is stronger than a single layer of natural wood of same thickness. In commercial terms, plywood came into its own from the 1930s onwards, following advances in adhesive technology.

In the early 20th century, in Japan, the art of making round artificial pearls known as



“cultured pearls” was perfected by Tatsuhei Mise, Dr. Nishikawa and then Kokichi Mikimoto. Natural pearls are formed in nature, more or less by chance. Cultured pearls, by contrast, are those in which humans give a helping hand, by actually inserting a foreign object into the tissue of an oyster. Earlier cultured pearls were made by artificially stimulating freshwater mollusks into producing a type of pearl, but the pearls produced in this way were generally hemispherical mabes, rather than completely round pearls. Natural pearls have widely varying shapes, sizes, and qualities, and are difficult to find—but cultured pearls can be “designed” from the start to be round and primarily flawless.

Now in the 21st century, Sean Howard, in America, developed the art of making world’s first, patented, bendable artificial stone.

Construction industry always wanted to simulate the look of aged materials, hence Sean Howard got it registered as Weathered Stone®

Sean Howard, CEO and inventor of Weathered Stone®, began researching methods to create a retrofitting bendable stone in 1995. With experience in construction methods, commercial decorative painting, and coatings manufacturing Howard achieved his goal in 2004 and at that time applied for patents for the manufacturing and methods thereof for Weathered Stone®

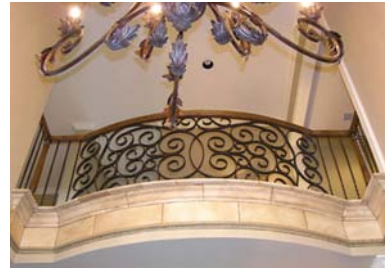
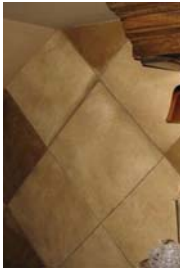
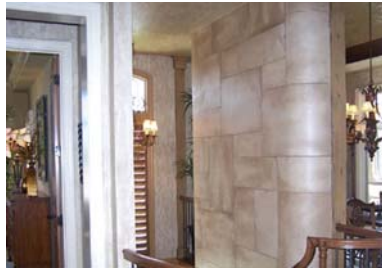
“Weathered Stone® exhibits many advantages over natural stone”, comments Sean Howard, “Not only is it easier to install but it is also much more affordable.” Other benefits of Weathered Stone® are easy to repair, it is extremely lightweight making it more affordable to ship, it uses naturally renewable resources for

production making it a “Green” choice product, but the greatest aspect of Weathered Stone® is that once installed it looks and feels like real stone. It looks as old as the natural stone, yet it is modern in its concept, with superior technical characteristics.

Weathered Stone® combines the aesthetic appearance of Natural Stone with the uniformity and consistency of a manufactured product—the best of both the worlds.

“The ease and convenience of installing Weathered Stone® will revolutionize the way stone surfaces are used,” said Sean Howard. There is nothing on the market today in coverings that replicates the look and feel of real stone and leather as accurately as Weathered Stone®

Weathered Stone® becomes pliable during the installation



process, and dries after applied to a solid surface. The result is a sheet of stone that can be moulded, bent and shaped around any solid interior surface. You can bend it over and under and wrap it around the tiniest crevices. All adhesives are water based, making installation simple and time efficient. The final step of grouting the seams gives the installed product added depth and texture. It can also be used to re-surface existing floors, countertops, walls and sinks or practically any hard surface.

Weathered Stone® can be repaired. Its specially formulated grout has a colorant in it that repairs any small nicks or dings in the product. The grout is non-caustic, and will simply wipe on the damaged Weathered Stone™, and then can be wiped back off, instantly repairing any dings or nicks in the product. If there is a substantial damage, it can be

replaced by another piece of Weathered Stone.


Weathered Stone® is available in 22 standard colors, and custom colors are available, only limited by your imagination. Available in standard pre-cut sizes of 24x32 inch, 32x32 inch and 32x45 inches. Custom sizes are available from 2 x 2 inch up to 32 x 99 inch. It can easily be cut down to any size or shape. Weighs only 1 ¾ lbs per 32 x 32 inch panel and is only 1/32nd of an inch thick. It has a Class-A fire rating and is safe to use on gas or electric fire places and stove hoods.

Weathered Stone® can be adhered to practically all solid, interior spaces. It can be used for just about any interior surface. The unique ability that Weathered Stone® has to bend makes it a viable option for wall coverings, columns, floors,

countertops, furniture, crown moldings, archways, fireplaces, and much, much more, with minimum labour.

Weathered Stone® can be installed over bare sheetrock, painted sheetrock, textured walls, wall with small holes, wood paneling (without filling in the grooves), brick walls, concrete, plastic laminate, inside cultured marble sinks, metals, floors and much more

There is not another product in the market that has the ability to retrofit solid surfaces.

What started out as a solution to a problem has manifested into an empire that has revolutionized the wall covering market. 

Log on to www.weathered-stone.com for product and installation details and log on to www.globexmarketing.com for availability in India.